



GoProFor

LIFE17 GIE/IT/000561



LIFE14 IPE IT 018 GESTIRE 2020 Nature Integrated Management to 2020

Gherardo Fracassi
Ente regionale per i servizi all'agricoltura e alle
foreste - Regione Lombardia

PALERMO | 11 NOVEMBRE 2019

LIFE E RETE NATURA 2000

Dall'esperienza dei Progetti verso un modello condiviso per la Gestione Forestale

LIFE AND NATURA 2000 NETWORK

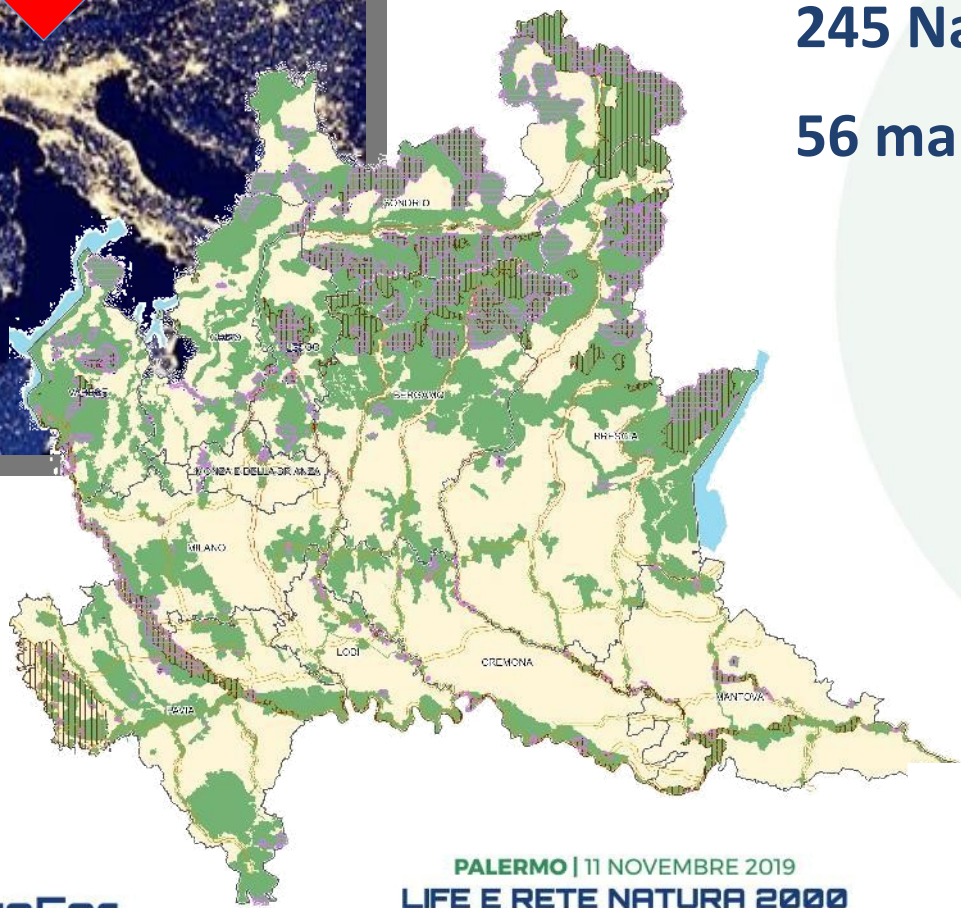
From Projects experience to a shared model for Forest Management








Natura 2000 network in Lombardy Region



15,6 % of Lombardy region
245 Natura 2000 sites
56 managing bodies



-  Special Protection Area (SPA)
-  Special Area of Conservation (SAC)
-  Regional ecological network first level elements
-  primary corridors with low and moderate anthropization
-  primary corridors with high anthropization

PALERMO | 11 NOVEMBRE 2019

LIFE E RETE NATURA 2000

Dall'esperienza dei Progetti verso un modello condiviso per la Gestione Forestale

LIFE Integrated Projects IP

*large scale execution of action plans
provided for by european legislation*



LIFE IP GESTIRE 2020 PROJECT

*Implementation of the Prioritized Action Framework (PAF)
in EU Natura 2000 Sites and in the Regional Ecological Network*

It aims to:

- A. Improve **governance and management models** of Natura 2000 regional network, also through capacity building activities
- B. Raise **awareness** and provide **information** on the value/potential of regional N2000 Sites
- C. Maintain and improve conservation **status of habitats and species**
- D. Monitor the environmental, social and economic **impacts** of the project's actions in achieving the objectives of the PAF



PALERMO | 11 NOVEMBRE 2019
LIFE E RETE NATURA 2000
Dall'esperienza dei Progetti verso un modello condiviso per la Gestione Forestale

LIFE AND NATURA 2000 NETWORK
From Projects experience to a shared model for Forest Management



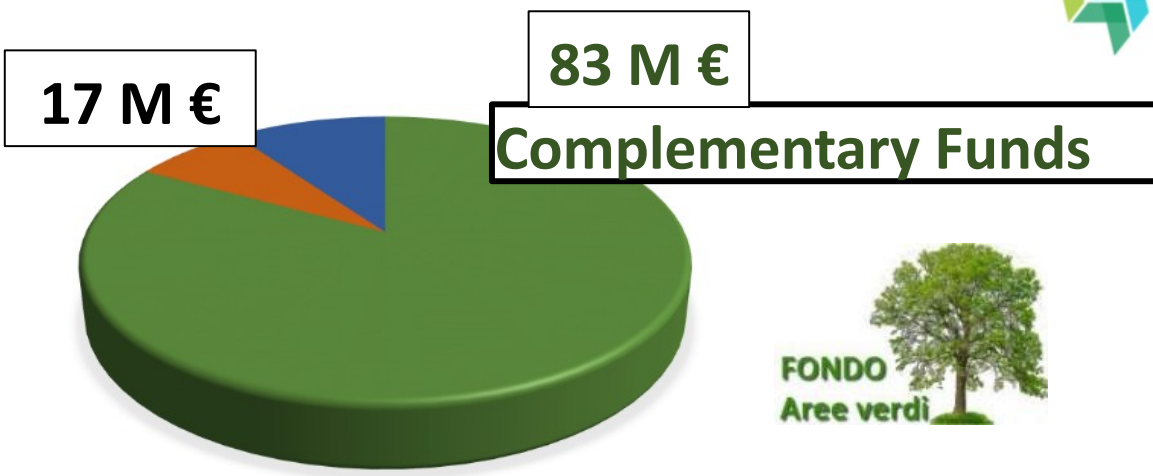
Period 2016-2023 **8 years**

Coordinating beneficiary: LOMBARDY REGION - ENVIRONMENT AND CLIMATE
 Associated beneficiaries: Regional Authority for Agriculture and Forestry Services (ERSAF), (FLA), CARABINIERI FORESTALI, International Birdlife Association Italy (LIPU), WWF, COMUNITA' AMBIENTE

TOTAL BUDGET: **approx 17M €** **n. 64 Actions**
 EU LIFE financial contribution: **approx 10 M €** (58 % budget)



Con il contributo dello strumento Life della Commissione Europea Sostenuto da
 LIFE GESTIRE 2020 - Nature Integrated Management to 2020. La strategia integrata per Rete Natura 2000 e la biodiversità in Lombardia

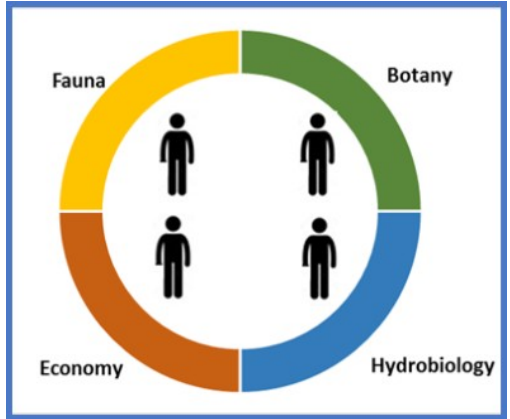


Life Gestire 2020: the «facilitators» innovative role

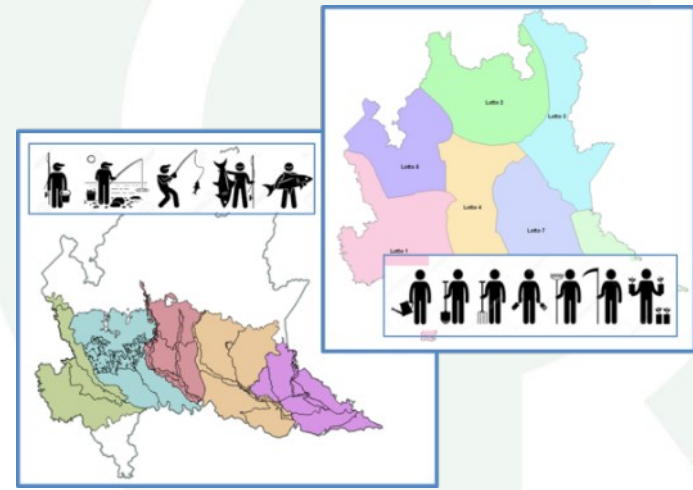
LIFE and complementary funds
promotion

management bodies and stakeholders
support

n.4 Expert Facilitators
with specific fields of expertise



n. 12 Local Facilitators



2017-2019:

249 PROJECTS  **TOTAL AMOUNT: 26,6 ML €**

Life Gestire 2020: improving forest habitats

Habitats		Hectars
9180*	Tilio-Acerion forests of slopes, screes and ravines	2.188
9110	Luzulo-Fagetum beech forests	5.701
9410	Acidophilous Picea forests of the montane to alpine levels (Vaccinio Piceetea)	23.915
91K0	Illyrian Fagus sylvatica forests (Aremonio-Fagion)	5.288

Habitats		Hectars
9160	Sub-Atlantic and medio-European oak or oak-hornbeam forests of the Carpinion betuli	764
9190	Old acidophilous oak woods with Quercus robur on sandy plains	597
91F0	Riparian mixed forests of Quercus robur, Ulmus laevis and Ulmus minor, Fraxinus excelsior or Fraxinus angustifolia, along the great rivers (Ulmenion minoris)	3.659
91H0*	Pannonian woods with Quercus pubescens	9
91L0	Illyrian oak-hornbeam forests (Erythronio-carpinion)	816

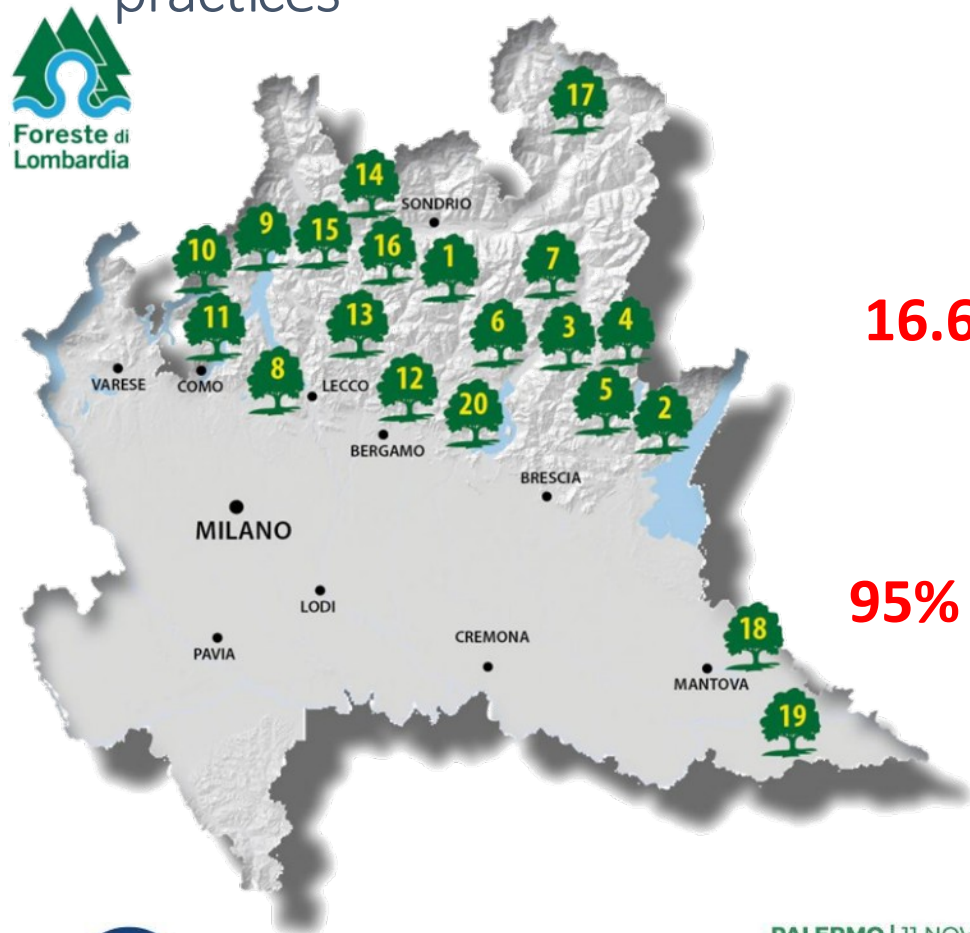
- Insufficient conservation status
- Low attention to the faunal goals in the forest management

A8, C13 actions

- Fragmentation of habitat forest, small areas, genetic isolation
- Insufficient conservation status
- Alien species

A6, A18, C12, C14 actions

A8 C13 Actions- Planning and executing of working programs for improvements in composition, structure and wildlife suitability of regional-owned forest (RF) habitats in order to define best practices



Regional-owned property
23.000 Hectars

16.600 Ha forests managed by ERSAF
 (n. 20 RF)

95% protected areas



PALERMO | 11 NOVEMBRE 2019

LIFE E RETE NATURA 2000

Dall'esperienza dei Progetti verso un modello condiviso per la Gestione Forestale

LIFE AND NATURA 2000 NETWORK

From Projects experience to a shared model for Forest Management



Regional-owned forests: **BIODIVERSITY RESERVES**

- **74% of habitats** found in the Lombardy region
- **88% of forest habitats** found in the Lombardy region
- **70% animal species** of UE conservation interest found in the Lombardy region

Sustainable forest management and biodiversity conservation-oriented **management tools**:

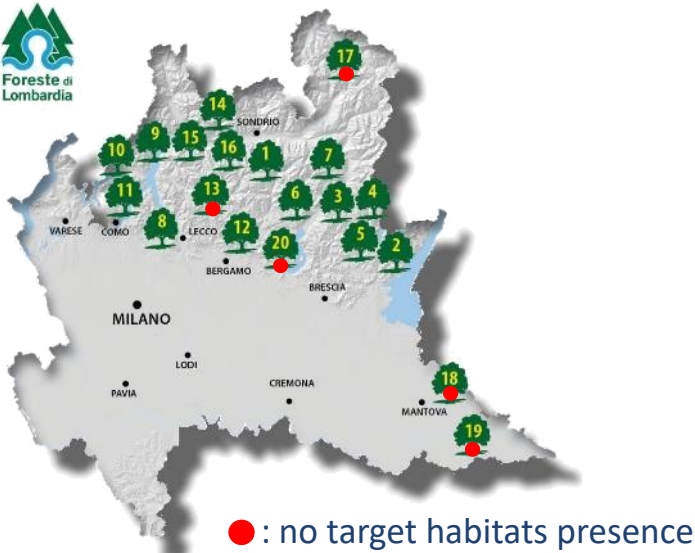
- **FSC and PFSC Certifications**
- «Carta delle foreste» (16 commitments for good RF management)
- Management Plans of N2000 sites
- Comprehensive forestry management plan



Il marchio della
gestione forestale
responsabile



Regional Forests and target habitats and fauna:



habitat	9110	9180*	91k0	9410
Lombardy (Ha)	5.701	2.188	5.288	23.915
FFdL (Ha)	290	458	2.044	926
%	5	21	39	4

Fauna is often ignored in forestry practices

Major threats to fauna conservation:

- Forest trimming for wide areas,
- Removal of the necromass,
- Loss of ecotones,
- Wrong cutting period

- **Boreal Owl or Tengmalm's Owl, *Aegolius funereus*,**
- **Eurasian Pygmy Owl, *Glaucidium passerinum*,**
- **Black Woodpecker, *Dryocopus martius*,**
- **Grey-faced Woodpecker, *Picus canus*,**
- **Rosalia longicorn or Alpine longhorn beetle, *Rosalia alpina*,**



Photo: S. Hardersen
CNCB Bosco Fontana

PROJECT AREA ASSESSMENT

AIMS:

- Improvements of forest habitats (structure and species quality)
- Improvement of wildlife suitability

100 hectares

MULTIFUNCTIONAL WORKING GROUP:



foresters + naturalists



entomologists



ornithologists



Activities coordination:



Preliminary choice of project areas:

- analysis of silvicultural interventions foreseen in the forestry management plan
- analysis of N2000 Sites Management Plans
- Contributions to the assessment of project target species
- Surveys and projects drafting



Assessment of wildlife potential in RF, based on

- existing data on target species (woodpeckers, owls, Rosalia, beetles)
- dead wood research evidences



Joint field surveys Final shared choice of project areas



Habitats in the Regional-owned forest
(Hectares)

ERSAF first proposal

Wildlife suitability
by LIPU by CCF

Final shared choice of project areas

	Habitats in the Regional-owned forest (Hectares)					ERSAF first proposal				Wildlife suitability by LIPU by CCF		Final shared choice of project areas				
	9110	9180*	91K0	9410	Tot.	9110	9180*	91K0	9410	Avifauna	Entomo fauna	9110	9180*	91K0	9410	Tot.
1-AZZAREDO CASU'				32	32				x	Cc, Cn, Pn, (Gc)						0
2-GARDESANA OCCIDENTALE		257	1857		2114		x	x		Cc, Cn, Pn, Pc		6	38			44
3-VAL GRIGNA	39			382	421				x	Cc, Cn, Pn, (Pc), Fm, Gc				7		7
4-ALPE VAIA	25			45	70	x				Cc, Cn						0
5-ANFO-VAL CAFFARO	27	2	21		50					Cc, Cn, Pn, Pc?						0
6-VAL DI SCALVE		31	80		111		x	x		Cc, Cn?, Pn, (Gc)			8			8
7-LEGNOLI		92	0		92		x			Cc, Cn, Pn, Pc?, Fm, Gc?		9				9
8-CORNI DI CANZO		39	21		61		x			Pn		12				12
9-VALSOLDA			9		9			x		Cc, Pn	Ra?		5			5
10-MONTE GENEROSO		18			18		x			Pn		12				12
12-RESEGONE		11	55		66		x	x		Cc, Cn, Pn		8	8			16
14-VAL MASINO	64	4		148	215	x			x	Cc, Cn, Pn, Pc?, Pt?	(Ra)	8			13	21
15-VAL LESINA	104	4		88	197				x	Cc, Cn, Pn, Pc?						0
16-VAL GEROLA	32			231	263	x			x	Cc, Cn, Pn, Pc?, Fm, Gc, Pt?		4			12	16
	290	458	2044	926	3718							12	47	59	32	150

Legend:

HABITAT PRESENCE
x Proposal

good
not so good

Legend:

- Cc Civetta capogrosso, *Aegolius funereus*, **Boreal Owl or Tengmalm's Owl**
 - Cn Civetta nana, *Glaucidium passerinum*, **Eurasian Pygmy Owl**
 - Pn Picchio nero, *Dryocopus martius*, **Black Woodpecker**
 - Pc Picchio cenerino, *Picus canus*, **Grey-faced Woodpecker**
 - Pt Picchio tridattilo, *Picoides tridactylus*, **Eurasian Three-toed Woodpecker**
 - Fm Francolino di monte, *Tetrastes bonasia*, **Hazel Grouse**
 - Gc Gallo cedrone, *Tetrao urogallus*, **Western Capercaillie**
 - Ra Rosalia alpina, *Rosalia alpina*, **Rosalia longicorn or Alpine longhorn beetle**
- () rare or historical reports
? possible presence

9 projects

Main project topics:

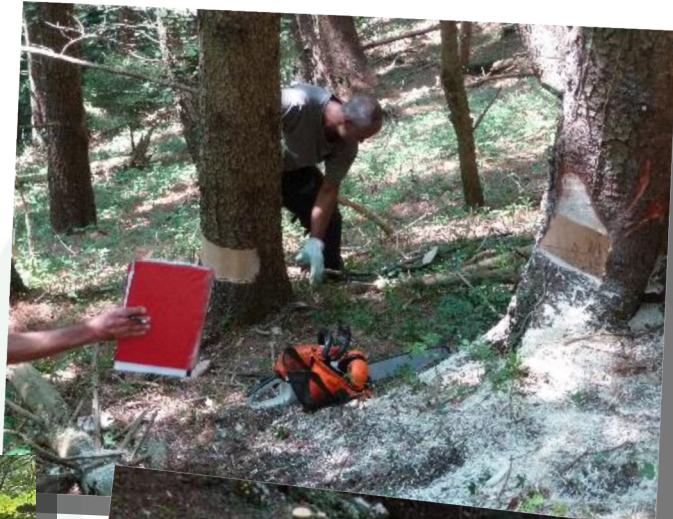
- The LIFE G2020 Project
- Monitoring and Communication actions
- Habitat and target species description

Specific topics:

- Forestry, Species and habitats provisions as per the management plans
- Specific forestry actions
- Complementary actions to improve wildlife suitability according to experts' advice
- Forestry Certifications

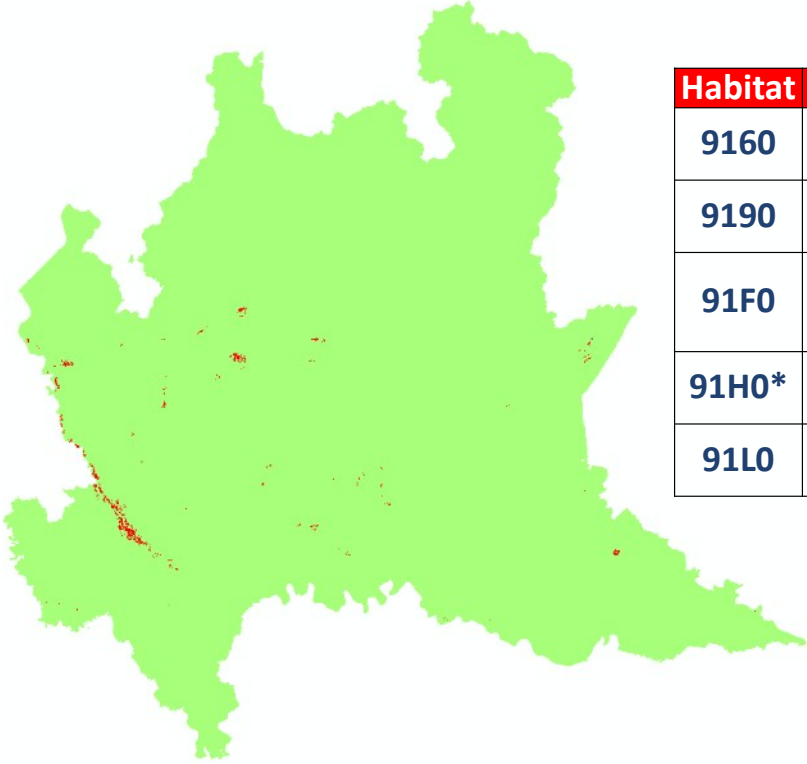


Field **Training** and the **execution** of projects:





Quercus ssp. Habitats in Lombardy



Habitat	Hectars
9160	764
9190	597
91F0	3.659
91H0*	9
91L0	816

Mixed mesophilous woods with oak, white hornbeam, elm and ash tree, used to be widespread in Po Plain, but now:

1. Residual forest patches
2. High fragmentation
3. Small areas
4. Genetic isolation
5. Insufficient Conservation status
6. Low vitality of the plants (environmental stresses, climate change)
7. Alien species



**A6, A18,
C12, C14
actions**

A18 C12 C14 Actions- Planning and implementation of working programs for improvements in structure and ecosystem in *Quercus ssp.* habitats in order to define best practices

(A18)

Starting in 2019

Habitat evaluation

- State of the art
- Assessment of:
 - Critical issues
 - Interventions priority

(C14)

Starting in 2019

Genetic mapping of
the most
representative
Lombardy Forest

- Genetic surveys in 5 woods
- Study of the genetic variability distribution focusing on ecological features

Technical fact-sheets

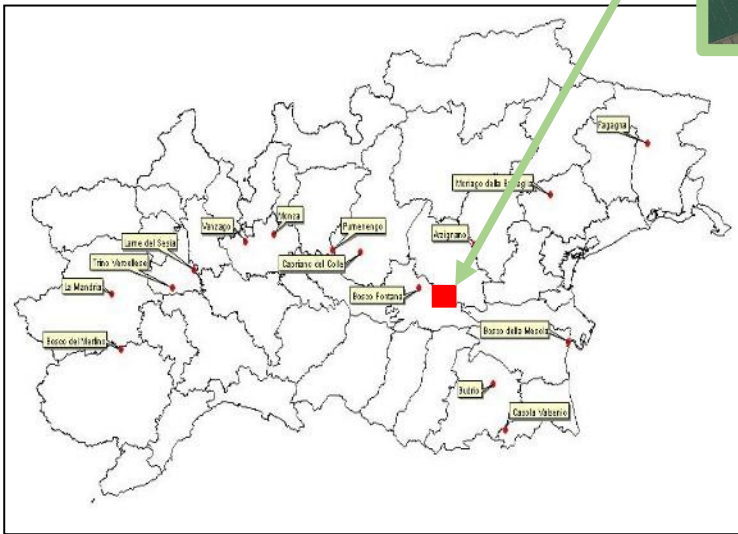
«Genetic-based forest management protocol for *Quercus robur* woods in Lombardy»

**interventions on 100 hectares,
carried out by Managing Bodies of Natura 2000 Sites (C12)**

Genetic flows restoration:

2003 Carpaneta forest foundation by ERSAF (*Quercus robur*)

- 40 Hectars
- n. 15 genetic pools from the whole northern Italy



«Seeds collection guidelines for «Foresta Carpaneta», in progress

Assessment of:

- Genetic flow
- Seed quality (eg. sprouting rate, genetic traits)

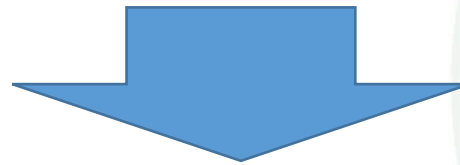
2018 application for natural biogenetic reserve foundation (A6)

Tree nursery - regional seeds registry (C14)



positive impact on the target habitats
locally

for a **regional significance**
a large-scale implementation is required



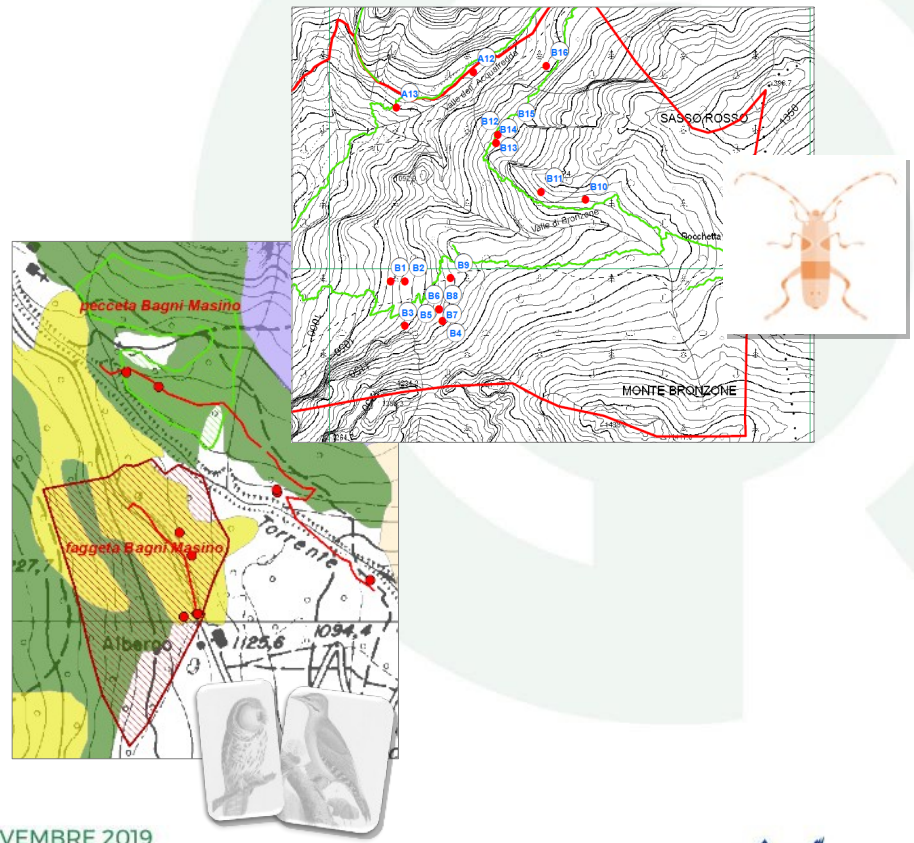
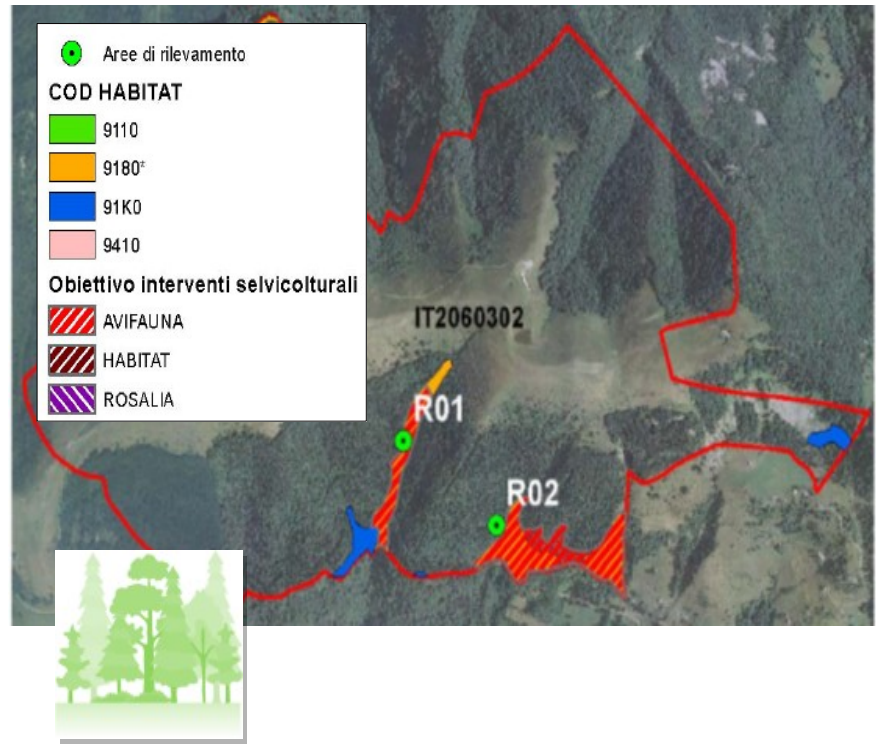
improving technicians' awareness
ONLINE RESOURCES AVAILABILITY

TRAINING FIELD TRIPS

Monitoring of the environmental impact of the project (Action D1)

before and after

by plant and wildlife specialists based on monitoring Network and Protocols (permanent plots, transects, trees...)





natura
che vale
BIODIVERSITÀ, RICCHEZZA
DELLA LOMBARDIA

www.naturachevale.it

www.facebook.com/naturachevale/

THANK
YOU!



PALERMO | 11 NOVEMBRE 2019
LIFE E RETE NATURA 2000
Dall'esperienza dei Progetti verso un modello condiviso per la Gestione Forestale

LIFE AND NATURA 2000 NETWORK
From Projects experience to a shared model for Forest Management

